

### Here Comes the Sun!

This year Spring was cold and rainy, but for us in Oxford at least the sun is now shining and the weather is starting to feel warmer.

Hopefully, as restrictions ease, many of you will by now have been able to enjoy a much needed get-together after a long day or a generous post-nights breakfast with your favourite colleagues, without having to sit outside in the cold and rain! And we're really appreciating the fact that we can now hug our close friends and colleagues again!



For us, lockdown easing means that we are gradually moving back to work in our offices and seeing our colleagues again after more than a year of home working. Alessandra is now regularly back in the office again and Rachel will be gradually moving back for one or two days a week over the next few weeks.

In this newsletter, we have more news about our Study Day in December, a plea for data entry completion for the PPH study and, very exciting, we're unveiling our new UKMidSS study! But first of all, we want to recognise the hard work of our reporters.

### Summer Stars

This time we're thanking three midwives who deserve particular recognition for their extra work catching up with data entry. Our June super stars are **Julie Grindey** from Stockport Birth Centre, **Sascha Smith** from the Brook Birth Centre in Ipswich and **Pamela Niven** from the Midwifery Led Unit in Kirkcaldy. A nice treat will be on its way to you soon, and we will be also catching up with the outstanding treats that weren't sent out because of the pandemic!

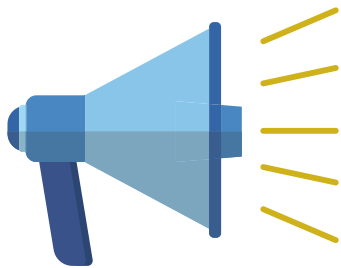
We would also like to welcome our new reporters, including **Rosalia Padron Pol** from the Heath Birth Centre at the Royal Free Hospital, **Lisa May Acreman** from Wallingford Community MLU and **Kathryn Owen** from the White Horse Birth Centre. Lastly, many thanks to those regular reporters who just keep up with their reporting and data entry.

If you would like to nominate a colleague who you know has been doing a great job for UKMidSS, please do so!

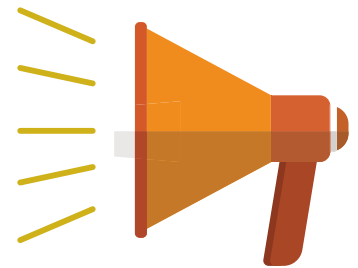


## 3rd UKMidSS Study Day

We're delighted to announce that our 3rd UKMidSS Study Day will take place on 8th December 2021 and this year we're going virtual! While we're really going to miss the warmth and chat of our usual get-togethers in Birmingham we hope that moving online will mean that even more of you will be able to attend. We have an exciting programme planned, with a mixture of results and updates from UKMidSS studies, some great speakers, and **NEW THIS YEAR** the chance to submit a poster! Keep your eyes peeled for more information and registration details later in the year. We look forward to virtually meeting many of you!




New for this year's Study Day, we are inviting you to **submit a poster!** The topic of our poster session is "Positive practice points from the pandemic". We want to hear about any service or practice changes you brought in during the pandemic in your midwifery unit that you'd like to share with the rest of the UKMidSS community. To make a submission please send us a 300 word abstract for your poster by midday on 12th September 2021. We will select the four best submissions for presentation at the Study Day, and the best, as voted for by Study Day delegates, will win a prize.





**UKMidSS**  
UK Midwifery Study System

**VIRTUAL STUDY DAY**

Results of UKMidSS studies  
'Hot topics'  
Poster session

 THE ROYAL COLLEGE OF MIDWIVES

 NPEU

 UNIVERSITY OF OXFORD

**SAVE THE DATE** 2021  
8th DECEMBER

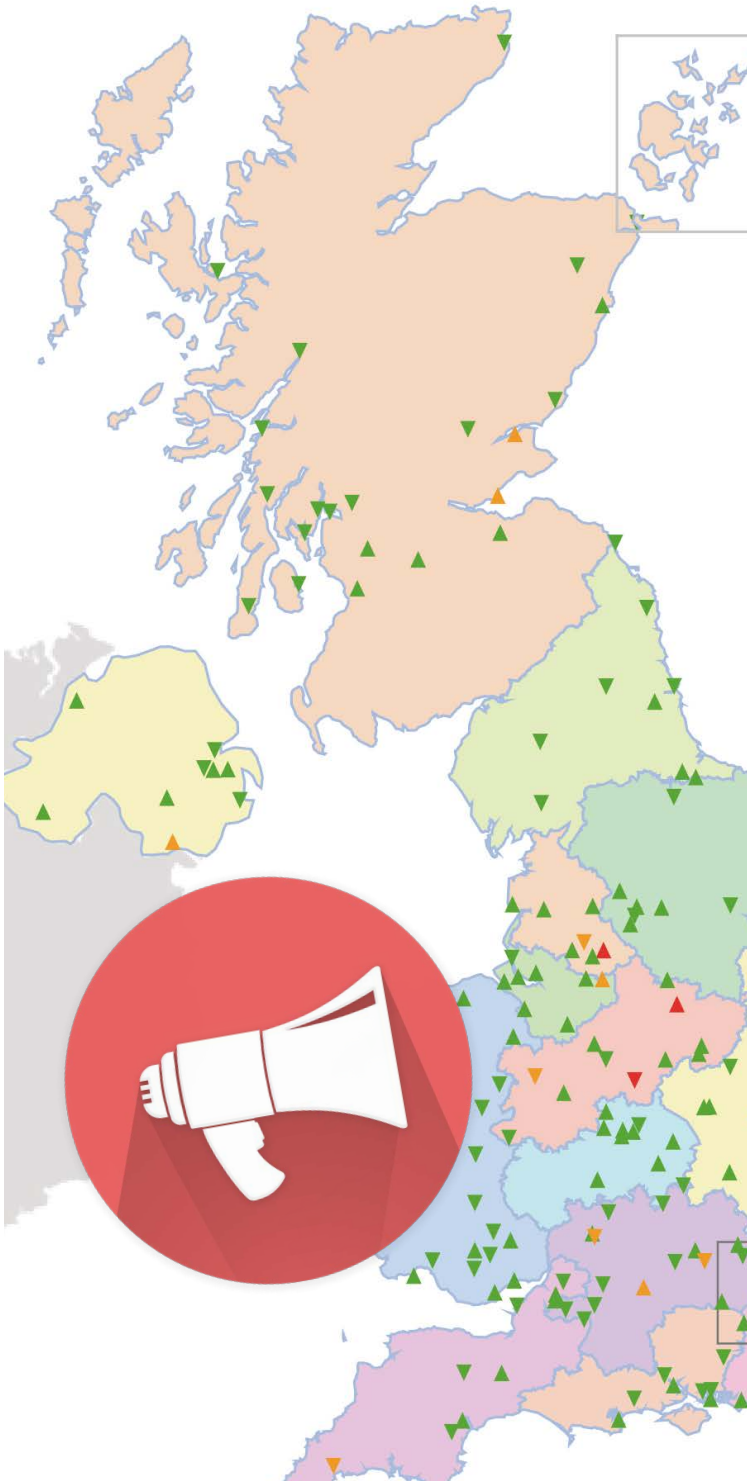
## Care in latent phase/early labour - what data do you capture?



The UKMidSS team are working with Oxford University Hospitals NHS Trust Consultant Midwife Emily Brace to develop a research project about the latent phase of labour. We're in the early stages of planning the project and one of the things we're doing is exploring how information about contact with women and assessment/admissions/care in the early (latent) phase of labour is recorded. These data aren't routinely available at a national level, but we know that some NHS Trusts/Health Boards record this information in their electronic patient record system. We're considering a formal survey, but in the meantime, if you do collect this information in any way in your organisation, please email Alessandra on [ukmidss@npeu.ox.ac.uk](mailto:ukmidss@npeu.ox.ac.uk) to let us know. Thank you!

## PPH Study

We have started analysis for the PPH Study so it's really urgent that all outstanding data entry is completed as soon as possible. These units have some data entry that is still not complete. **Please contact us ASAP if your unit is on this list.**



Abbey Birth Centre, St Peter's Hospital
Alexandra Birth Centre, Watford General Hospital
AMU Midwifery Suite, Ayrshire Maternity Unit
Arbroath Community Maternity Unit, Arbroath Infirmary
Aylesbury Birth Centre
Barking Birth Centre
Bluebell Birth Centre, North Manchester General Hospital
Bracken Birth Centre, Musgrove Park Hospital
Brecon Birth Centre, Brecon War Memorial Hospital
Bronglais Midwife Led Unit
Brook Birth Centre, Ipswich Hospital
Chippenham Birth Centre, Chippenham Community Hospital
Coastal Birthing Unit, Clacton and District Hospital
Community Maternity Unit, Perth Royal Infirmary
Llanidloes Birth Centre
Lotus Midwifery Unit, Leeds General Infirmary
Maidstone Birth Centre, Maidstone Hospital
Meadows Birth Centre, Leicester General Hospital
New Beginnings, Southend Hospital
Oxford Spires Midwifery-led Unit, The John Radcliffe Hospital
Penrice Birth Centre, St Austell
Singleton Midwife-led Unit, William Harvey Hospital
Stockport Birth Centre
Stroud Maternity Unit
Tair Afon Birth Centre
Wrekin Midwife Led Unit, Princess Royal Hospital
The Birth Centre, Birmingham Women's Hospital
The Birthing Unit, Broomfield Hospital
The Birth Centre, St Helier Hospital
The Birthing Room, St Mary's Hospital, Isles of Scilly
The Birthing Unit, Chelsea and Westminster Hospital
The Birthing Unit, County Hospital, Stafford
The Birthing Unit, East Surrey Hospital
The Birthing Unit, Ninewells Hospital
The Carmen Suite, St George's Hospital, Tooting
The EGA Birth Centre, University College Hospital
The Heath Birth Centre, Royal Free Hospital
The Home from Home Unit, Ysbyty Dolgellau
The Marton Suite, James Cook University Hospital
The Mary Rose Birth Centre, Queen Alexandra Hospital
The Midwife Led Birthing Unit, Peterborough City Hospital
The Midwife Led Unit, Leighton Hospital, Crewe
The Midwife Led Unit, Lister Hospital
The Midwifery Led Birth Unit, University Hospital of Wales
The Midwifery Led Unit, Altnagelvin Area Hospital
The White Horse Birth Centre
The Willow Suite, Birmingham Heartlands Hospital
Withybush Midwife Led Unit
Wycombe Birth Centre

**Remember:** Any reported case and the associated control ALL require data entry. This is entered via OpenClinica using your personal log-in details. In addition, when you do the data entry, please note that there are 7 tabs for the data entry.

Please get in touch with Alessandra at UKMidSS for support if you are a new reporter or if you need a new log-in for OpenClinica.

◀ Sec 2 (10/16) Sec 3 (6/35) Sec 4 (0/47) ▶ -- Select to Jump --

Title: Section 2. Woman's details

Instructions:

Woman's details

## New UKMidSS Study! Diabetes in women admitted to a midwifery unit

With the PPH study coming to an end, the UKMidSS team has been working behind the scenes on a new study, which will investigate outcomes in women with diabetes (gestational or pre-existing) who are admitted to midwifery units for labour care.

This study has come about partly because in the **UKMidSS survey of midwifery unit admission criteria** that we carried out in 2018, we found that around a quarter of local midwifery unit admission guidelines indicated that women with gestational diabetes were explicitly eligible for midwifery unit birth or would be considered for admission. Also, one of the top ten research priorities identified by women and healthcare professionals in the **Diabetes and Pregnancy Priority Setting Partnership**, was about the labour and birth experiences of women with diabetes and how to enhance choice for these women. The 'long-list' of questions included "When is it safe for women with diabetes to give birth in a midwifery unit compared with a hospital birth?"

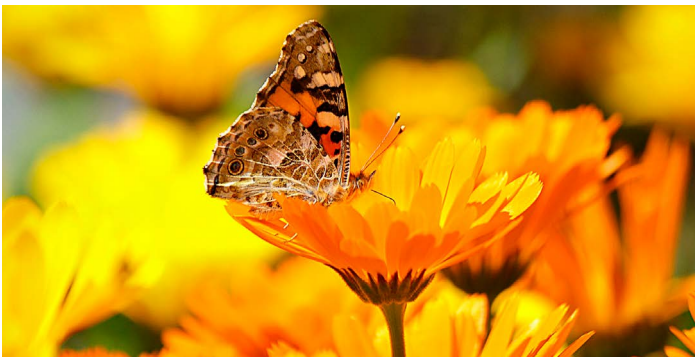
So, with that in mind, this study will aim to estimate the proportion of women with diabetes admitted to midwifery units for labour care, and to describe and compare their labour care, management and maternal and neonatal outcomes compared with other women admitted to midwifery units.

While we prepare for the new study, you can sit back and relax for a while, but please keep checking your emails regularly for more information, and if you have any questions let us know.



## CPD certificates

If you need a CPD certificate for your revalidation, please get in touch! Being a UKMidSS reporter means that you are contributing to national audit and research. You can drop us an [ukmidss@npeu.ox.ac.uk](mailto:ukmidss@npeu.ox.ac.uk)



## Update contact details

Is one of your reporters leaving? Is the lead midwife for the MLU going on maternity leave? Is your Head of Midwifery taking a sabbatical? If yes, please do let us know. We rely on updated contact details to communicate news as well as collecting data for our studies.

 @NPEU\_UKMidSS  01865 617823  [ukmidss@npeu.ox.ac.uk](mailto:ukmidss@npeu.ox.ac.uk)

