

Severe Obesity Study Results – an Update

After all your hard work reporting cases and entering data for the Severe Obesity Study last year we understand that you're all keen to hear the results. Rachel presented interim results, based on data entered as of the end of March 2017, at the International Confederation of Midwives Triennial Congress in Toronto on 19th June. She was also pleased to catch up with a few UKMidSS reporters who had also made the journey to Canada.

We are now hard at work completing analysis and writing up the results for publication in an open-access journal. We aren't able to share any results here as to do so could jeopardise that publication – understandably journals are not keen to publish work which has been 'published' in any form elsewhere. So please bear with us!

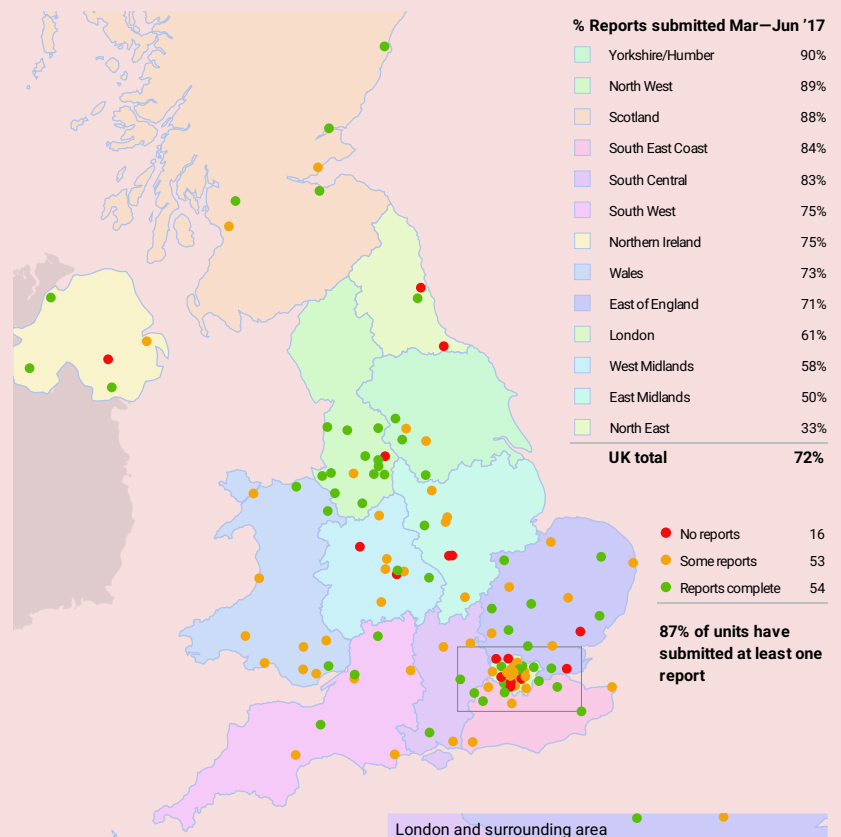
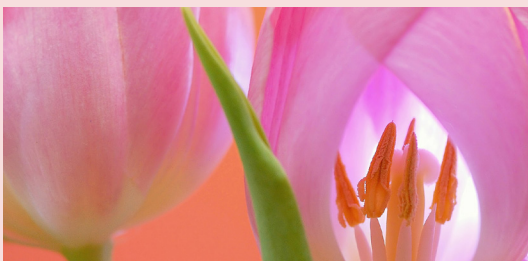
In the meantime we are pleased that we have had abstracts accepted to present a poster on results of the Severe Obesity Study at the 12th International Normal Labour and Birth Research Conference in Grange over Sands in early October and at the RCM Annual Conference in Manchester at the end of October. We hope to see some of you there.

Neonatal Admission Study Reporting

Our familiar map shows all the units contributing to UKMidSS and response to monthly report request emails for March to June. Overall, 87% of units have submitted at least one monthly report for the Neonatal Admission Study. Our regional leaders are Yorkshire and Humber, with a fantastic 90% response rate, followed by North West and Scotland, with 89% and 88% respectively.

Over the page we have listed all our units and how they are doing in terms of monthly reporting.

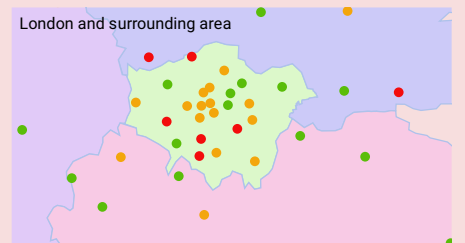
Are you up to date?



Data source for unit location: BirthChoiceUK database; used with permission from Rod Gibson Associates Ltd.

Contains OS data © Crown copyright and database right 2015

24/07/17



Thank you for sending us your monthly reports for the Neonatal Admission Study:

All reports received:

Acorn Suite, Bedford Hospital
Airedale Birthing Centre
Alongside Maternity Unit, Aberdeen Maternity Hospital
Birth Centre, Darent Valley Hospital
Birth Centre, Epsom Hospital
Birth Centre, Northwick Park Hospital
Birth Centre, Wythenshawe Hospital
Birth Place, Medway Maritime Hospital
Birth Unit, Gloucestershire Royal Hospital
Birthing Centre, Simpson Centre, Edinburgh
Birthing Unit, Princess Alexandra Hospital, Harlow
Birthing Unit, Ninewells Hospital, Dundee
Bluebell Birth Centre, North Manchester General Hospital
Bracken Birth Centre, Musgrove Park Hospital
Broadlands Birth Centre, Princess Anne Hospital
Brook Birth Centre, Ipswich Hospital
Burnley Birth Centre
Calderdale Birth Centre
Community Maternity Unit, Royal Alexandra Hospital, Paisley
Derby Birth Centre
Eden Suite, Wirral Women and Children's Hospital
Fylde Coast Birth Centre, Victoria Hospital
Home from Home MLU, Royal Surrey County Hospital
Homerton Birth Centre
Lilac Birth Centre, Whipps Cross
Lotus Birth Centre, Royal London Hospital
Lucina Birth Centre, Coventry
Malden Suite, Kingston Hospital
Mendip Birth Suite, Southmead Hospital
Midwife Led Birthing Unit, Peterborough City Hospital
Midwife Led Birth Suite, Royal Bolton Hospital
Midwife Led Unit, Glan Clwyd Hospital,
Midwife Led Unit, Leighton Hospital
Midwife Led Unit, Lister Hospital
Midwife Led Unit, Liverpool Women's Hospital
Midwife Led Unit, Royal Hallamshire Hospital, Jessop Wing
Midwife Led Unit, Wrexham Maelor Hospital
Midwifery Led Unit, Altnagelvin Area Hospital
Midwifery Led Unit, Daisy Hill Hospital, Newry
Midwifery Led Unit, South West Acute Hospital
Midwifery Led Unit, St Mary's Hospital, Manchester
Midwifery-Led Birthing Unit, Norfolk and Norwich University Hospital
Midwifery-led Unit, Countess of Chester Hospital
Midwifery-led Unit, Royal Gwent Hospital, Newport
Mulberry Birth Centre, Frimley Park Hospital
Newcastle Birthing Centre, Royal Victoria Infirmary
Preston Birth Centre, Royal Preston Hospital
Queen's Birth Centre, Queen's Hospital, Romford
Rosie Birth Centre, Rosie Hospital
Rushey Birth Centre, Royal Berkshire Hospital
Serenity Birth Centre, City Hospital, Birmingham
Singleton Midwife-led Unit, William Harvey Hospital
Stockport Birth Centre, Stepping Hill Hospital
Willow Suite, Basildon University Hospital

Some reports received:

Abbey Birth Centre, St Peter's Hospital
AMU Midwifery Suite, Ayrshire Maternity Unit
Aylesbury Birth Centre
Barratt Birth Centre, Northampton
Birth Centre, Croydon University Hospital
Birth Centre, Queen Charlotte's and Chelsea Hospital
Birth Centre, Whittington Hospital,
Birth Centre, Nevill Hall Hospital
Birth Centre, North Middlesex Hospital
Birthing Unit, Broomfield Hospital
Birthing Unit, Chelsea and Westminster Hospital
Birthing Unit, East Surrey Hospital

Birthing Unit, West Suffolk Hospital,
Bradford Birth Centre
Bronglais Midwife Led Unit, Aberystwyth
Chesterfield Birth Centre, Chesterfield Royal Hospital
Chichester Birth Centre, St Richard's Hospital,
Dolphin Suite, James Paget University Hospital,
EGA Birth Centre, University College Hospital
Exeter Low Risk Birth Unit, Royal Devon and Exeter
Glangwili Midwife Led Unit, Carmarthen
Greenwich Birth Centre, Queen Elizabeth Hospital
Haven Birthing Suite, Poole Hospital
Heath Birth Centre, Royal Free Hospital,
Home from Home Birth Centre, St Thomas' Hospital
Home from Home Unit, Ulster Hospital,
Mary Rose Birth Centre, Queen Alexandra Hospital
Meadow Birth Centre, Worcestershire Royal Hospital
Midwife Birth Centre, Royal Stoke University Hospital
Midwife led birthing unit, Queen Elizabeth Hospital, King's Lynn
Midwife Led Unit, Hillingdon Hospital, Uxbridge
Midwife Led Unit, Newham Hospital
Midwife Led Unit, Russells Hall Hospital
Midwife Led Unit, Singleton Hospital, Swansea
Midwife Led Unit, Victoria Hospital, Kirkcaldy
Midwife Led Unit, Warrington Hospital
Midwife Led Unit, Ysbyty Gwynedd
Midwifery Led Birth Unit, University Hospital of Wales, Cardiff
Midwifery Led Birthing Unit, Luton & Dunstable Hospital
Midwifery Led Unit, New Cross Hospital, Wolverhampton
Midwifery Led Unit, St Michael's Hospital, Bristol
Oasis Birthing Centre, Princess Royal University Hospital
Oxford Spire Midwifery-led Unit, The John Radcliffe Hospital
Pinderfields Birth Centre, Wakefield
Primrose Midwifery-led Birthing Suite, Hinchingsbrooke Hospital
Sanctuary Birth Centre, Nottingham University Hospital City Campus
Sanctuary Birth Centre, Nottingham University Hospital QMC Campus
St Mary's Birth Centre, Paddington
St Peter's MLU, Queen Elizabeth the Queen Mother Hospital
Tair Afon Birth Centre, Prince Charles Hospital
Tirion Birth Centre, Royal Glamorgan Hospital
White Horse Birth Centre, The Great Western Hospital
Willow Suite, Birmingham Heartlands Hospital

No reports received:

Can we ask UKMidSS reporters/Heads of Midwifery from the following units to please get in touch with us ASAP.

**Alexandra Birth Centre, Watford General Hospital
Barnet Birth Centre, Barnet Hospital
Birth Centre, Birmingham Women's Hospital
Birth Centre, St Helier Hospital
Carmen Suite, St George's Hospital
Juno Suite, Colchester General Hospital
Lewisham Birth Centre, University Hospital
Meadows Birth Centre, Leicester General Hospital
Marton Suite, James Cook University Hospital
Midwife Led Birth Centre, Royal Oldham Hospital
Midwifery-led Unit, Craigavon Area Hospital
New Beginnings, Southend Hospital
Northumbria Birthing Centre, Northumbria SECH
Natural Birth Centre, West Middlesex University Hospital
Orchard Birth Centre, Leicester Royal Infirmary
Wrekin Midwife Led Unit, Princess Royal Hospital**

UKMidSS Stars!

Our UKMidSS Stars for April to June have all demonstrated a commitment to complete data entry, resolve queries and generally get things right! **Sian Andrews** from the MLU at Liverpool Women's Hospital takes our award for April for her sterling efforts to complete data entry and resolve data queries for the Severe Obesity Study. In the Exeter Low Risk Birth Unit, **Kay Cassidy** and **Helen Russell** have shown a similar steely resolve to track down notes and correct errors. They share our award for May with **Gill Perks** from the Queen's Birth Centre in Romford. Gill struggled a bit with OpenClinica at first, coming new to the system for the Neonatal Admission Study, but she showed a rare determination not to be beaten and triumphed in the end! Finally, in June another new UKMidSS reporter, **Jemma Temple** from the Chesterfield Birth Centre, also went the extra mile to correct reporting and data entry errors. All our UKMidSS stars will be receiving a little something from us in the post to say **Thanks and well done to all!**



UKMidSS and NMC Revalidation

Being a UKMidSS reporter means that you are participating in national audit and research which counts as participatory Continuing Professional Development (CPD) for the purposes of NMC Revalidation. If you would like a certificate confirming your contribution to UKMidSS as a reporter please email us at

ukmidss@npeu.ox.ac.uk



Goodbye Piotr!

For the past 18 months most of the computer programming which keeps UKMidSS running behind the scenes has been done by Piotr Kochanski. If things go wrong Piotr has always been there to sort it out, and in the past few weeks he's worked particularly hard making some really important changes to our data collection systems (see page 4). Sadly for us, Piotr is leaving to take some time out from programming and travel the world instead (lucky Piotr!) so we wanted to take this opportunity to say Thank You and Bon Voyage!



Neonatal Admission Study: OpenClinica Changes

Most of you will have noticed that on 14th June we suspended data entry on cases and controls for the Neonatal Admission Study so that we could make some changes behind the scenes in OpenClinica. These have now been completed and you should have received confirmation that you can now continue with data entry in Openclinica.

The changes we have made have resulted in a new look to Section 4 on Labour and Birth Care and a new way of entering information on key dates and times. We now ask you to click on a link in the form in OpenClinica (as you do to enter postcode data) and enter all dates and times in a separate web form (see picture).

Key points to remember:

- Enter times as 24 hour clock in this format **hh:mm**
- Once you have entered all required dates and times, click Submit
- Please check the durations shown, e.g. length of first and second stage, age of the baby at discharge.
- If an error message occurs it is because there is a problem with the data you have entered.
- Please check and correct any errors, and click Submit again.
- Once you are happy with the data shown, copy the figures in the box into OpenClinica.
- The dates and times you enter into the web form are NOT saved – we only save the information that you copy and paste back into OpenClinica, so it is essential that you check dates and times carefully.

Thank you everyone for your patience over the past few weeks. We understand that it is has been frustrating and it may take a little while to get used to the new system. Our usual email reminders about reporting and data entry will restart shortly, but we completely understand that it may take you a little while to catch up – that's absolutely fine!

If you have any questions at all about this or any other aspect of data entry in OpenClinica, please email ukmidss@npeu.ox.ac.uk

or give us a call.

The screenshot shows a web form titled 'UKMidSS' with the instruction 'Please enter all labour and birth related dates and times here'. It contains nine questions (Q.1 to Q.9) with input fields for 'Date' and 'Time'. Q.1: Date and time of start of labour care in the midwifery unit. Q.2: Date and time of start of active 1st stage of labour. Q.3: Date and time of start of active 2nd stage of labour. Q.4: Date and time of last dose of pethidine/diamorphine, if applicable. Q.5: Date and time of delivery. Q.6: Date and time baby first seen by member of neonatal team. Q.7: Date and time baby admitted to neonatal care. Q.8: Date and time of neonatal death. Q.9: Date of discharge home. There are 'Not recorded' and 'Not applicable' checkboxes for Q.2, Q.3, Q.4, Q.6, Q.7, Q.8, and Q.9. A 'Submit' button is at the bottom. Footer text: '© 2017 NPEU About this app'.



@NPEU_UKMidSS



01865 289713



ukmidss@npeu.ox.ac.uk

