

Winter Newsletter



Welcome to our Winter Newsletter. We here in the UKMidSS office are pleased that (what feels like) the longest month of the year is now over and we're beginning to see daylight when we leave the office!

In this newsletter we will recap all that happened in UKMidSS in 2024 including publications, staff changes and study closures. We will also provide updates on what is to come this year.

UKMidSS Stars

As always, a big thank you to all of our reporters and champions of UKMidSS. Without you, we would not exist! We value the time and effort you dedicate in order to contribute to our studies and surveys.

This month, we have entered units who completed both the Induction of Labour survey and 3-month snapshot reporting into a lucky dip!

Congratulations to our winners:

- **Karen Marshall** and **Kirsteen Sommerville** from the **Alongside Midwifery Unit** at **University Hospital Wishaw**
- **Claire Flannery** from the **Lotus Midwifery Unit** at the **Leeds General Infirmary**
- **Julie Hopkins** from **The Birthing Unit** at **East Surrey Hospital**.

Your chocolates are in the post!

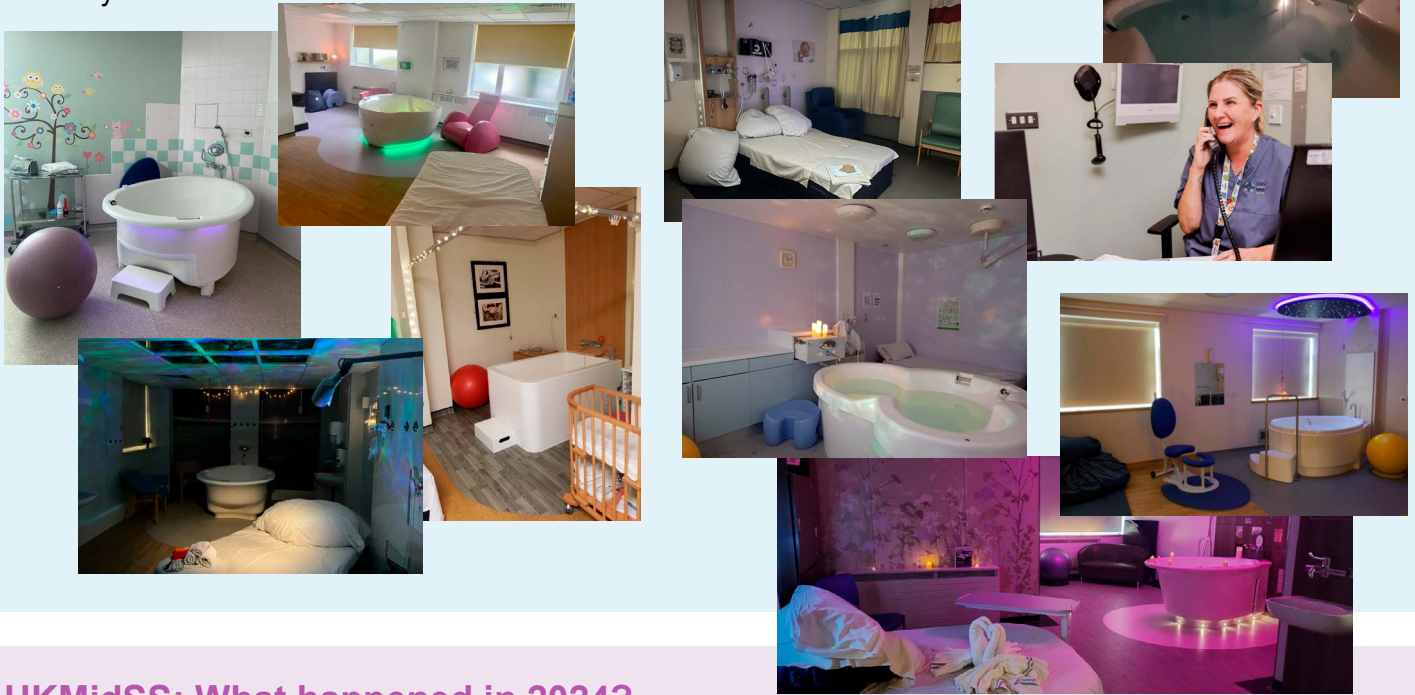


Your midwifery unit images

Towards the end of last year, we put out a call for images of your midwifery units and you certainly delivered! Thank you to all those who contributed, it has been great to see your beautiful birthing rooms – especially some of those in action!

We'll be using as many as possible on our website and in other published material. Our inbox is always open for more photos so if you missed our call or you have new photos taken, please consider sending them our way.

We are always particularly keen to have images of midwives at work (with appropriate permissions to use of course) as these are always more difficult to come by!



UKMidSS: What happened in 2024?

Diabetes Study

The results from the Diabetes Study were published in *BMJ Open* at the end of last year. You can read the paper [here](#) and download our summary infographic [here](#). The infographic can be particularly helpful when having discussions around place of birth with women.

Advanced Maternal Age Study

The last month to collect data for the Advanced Maternal Age study was January 2024 with outstanding data being submitted up to October. Analysis is underway so we will have results to share later this year. Watch this space!

Induction of Labour (IOL) Survey and Snapshot Monthly Reporting

We asked reporters to complete a one-time survey back in June, as well as to submit monthly reports for June, July and August. The aim of this was to help us understand IOL practice in midwifery units across the UK and determine whether there was a need to investigate this further using UKMidSS (see 'What's planned for 2025' below).

Staff Changes

We bid farewell to Research Midwife Alessandra after 4 years at UKMidSS in August and welcomed Tabitha to this role shortly after.

For our Steering Group, we said goodbye to Rachel Plachinski who has served as a lay member on the group for six years, and welcomed Tomasina Stacey, Senior Lecturer at King's College London, and Shelly Higgins, Consultant Midwife at Powys Teaching Health Board and NHS Wales Executive: Maternity and Neonatal Strategic Network.



UKMidSS: What's planned for 2025?

Induction of Labour (IOL) study

We had enough information from our survey and snapshot monthly reporting to confirm that it is feasible to conduct a study investigating characteristics and outcomes for women admitted to a midwifery unit following a component of IOL. Such a study will provide robust evidence to inform practice and choice of place of birth for these women. We anticipate that this study will open in the first half of this year. We plan to arrange drop-in online sessions as well as 1:1 calls with reporters to discuss identifying cases, collecting data and any other queries you may have. In the meantime, if you have any questions about this study please contact Tabitha on ukmidss@npeu.ox.ac.uk

National Reproductive Health & Childbirth Research Champions Group Symposium

We're excited to say that we have a stand at this event taking place on Monday 17th March in Manchester. Please come and visit us if you're attending, we'd love to meet you and put names to faces!



Starting the countdown to ten years of UKMidSS

Whilst UKMidSS was birthed in January 2016, it was conceived in February 2015 (research clearly takes longer to gestate than a typical human)! Ten years ago, Rachel was introducing the concept of UKMidSS to the RCM Heads of Midwifery group. Look at where we are now! Stay tuned for more about how we plan to celebrate and how you can get involved. Have you been around since the beginning? Let us know!

Changes over time in births in midwifery units

While we haven't had a national study to run, we have been analysing data submitted to UKMidSS to describe how the number of women giving birth in midwifery units has changed over the years. The results are really interesting and we hope to see them published later this year.

Conferences

We will be presenting UKMidSS research at the Royal College of Midwives Annual Conference <https://rcm.org.uk/events/2024/11/06/rcm-annual-conference-2025/> on 30th April/1st May. We have also submitted an abstract to the International Labour and Birth Research Conference <https://www.uclan.ac.uk/events/listing/labour-birth-conference> in September. We'll be at both conferences in any case so please do find us and say hello if you're there too!

Update contact details

Is one of your reporters leaving? Is the lead midwife for the MLU going on maternity leave? Is your Head of Midwifery taking a sabbatical? If yes, please do let us know. We rely on updated contact details to communicate news as well as collecting data for our studies



CPD certificates

If you need a CPD certificate for your revalidation, please get in touch! Being a UKMidSS reporter means that you are contributing to national audit and research. You can drop us an email ukmidss@npeu.ox.ac.uk

X @NPEU_UKMidSS ☎ 01865 617823 ✉ ukmidss@npeu.ox.ac.uk



Royal College
of Midwives

