



The national system to study the surgical management of a range of neonatal conditions – enabling national audit in neonatal surgery

Meconium Ileus study starts this month!

You should shortly receive a protocol with further details about the Meconium Ileus (MI) Study which starts this month. Data collection for the study will run from October 2012 to September 2014. The study will be led by Janet McNally from Bristol Royal Hospital for Children and Professor Marian Knight, NPEU.

Key points:

- MI is not reported in any UK registry and there is currently limited information about the incidence and mode of presentation of MI in the UK and Ireland. To date there are no prospective, population based observational studies of MI.
- Operative outcomes for MI are limited to case series collected over prolonged periods at single centres rather than population based data.
- By limiting the study to Cystic Fibrosis (CF) patients with MI we will be able to utilise CF registries to cross reference the cases and ensure high levels of case ascertainment.
- The MI study will collect accurate data on the incidence, mode of presentation, genotypes, clinical characteristics and outcomes for this group of infants.
- Outcome data at one year will be collected to allow critical analysis of the different management strategies which will aid the development of management guidelines and provide a benchmark against which paediatric surgeons can assess their own operative outcomes.

Case definition:

Any live-born infant presenting with Meconium Ileus and Cystic Fibrosis. Meconium Ileus is defined as bowel obstruction caused by inspissated meconium in the terminal ileum.



Read more online

To read this on your phone or to access our complete archive:
Open the BARCODE READER APP* on your phone and scan the code here

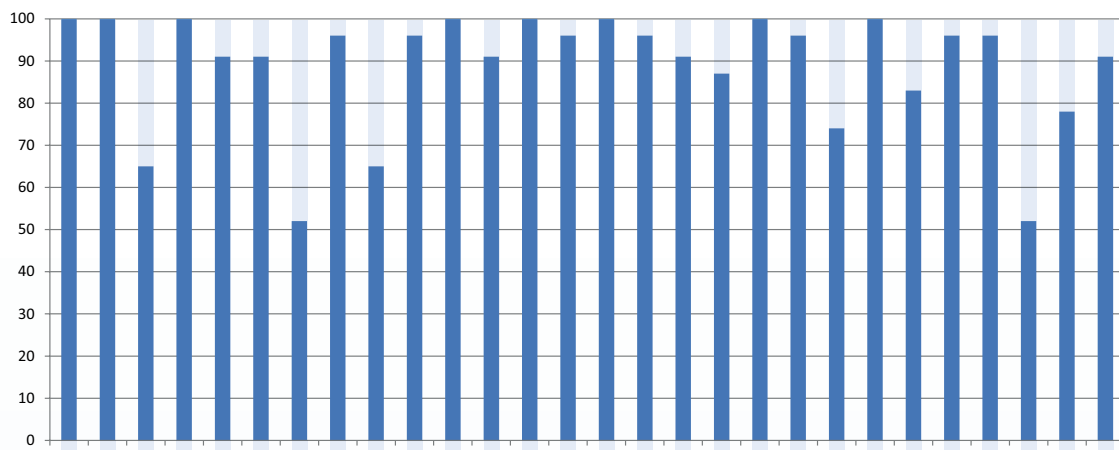
*Search your app store for 'qrcode'



Case report summary for cases reported up until 25th September 2012

Condition	Cases Reported	Forms returned	Confirmed Cases	Unconfirmed Cases	Duplicate Cases
Hirschsprung's Disease	304	208 (68)	191 (92)	17 (8)	0
Hirschsprung's Disease 1yr Forms	188	82 (44)	82 (100)	0 (0)	0

Hirschsprungs Disease - card return rates October 2010 - August 2012



Hirschsprungs Disease - form return rates October 2010 - August 2012

